

MONTHLY MEMBERSHIP PROGRESS REPORT

LOCATION VIRGINIA

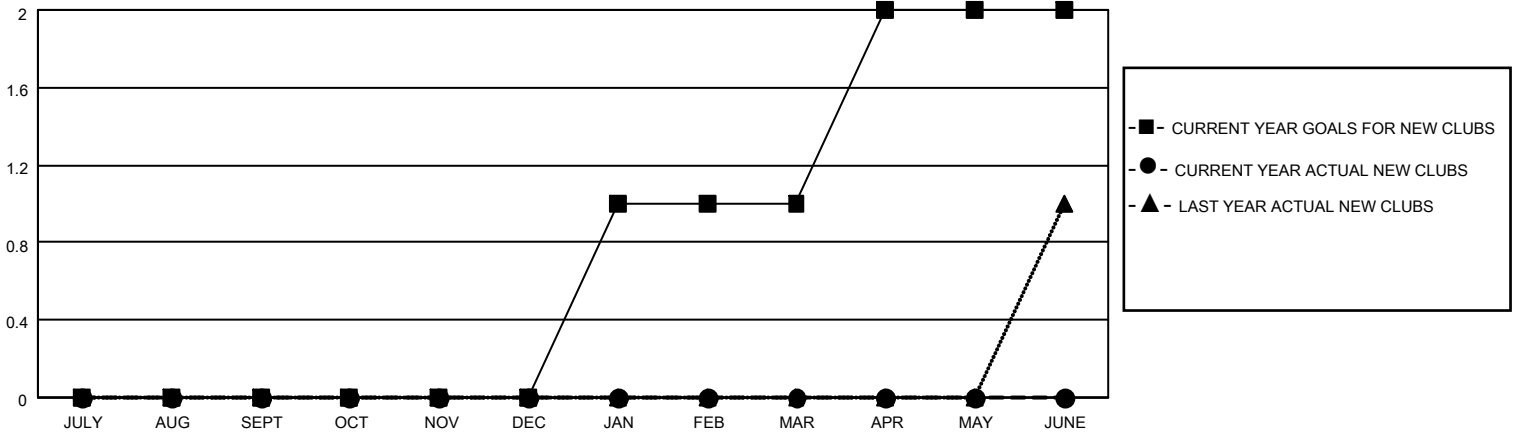
District 24 L

Results as of: 5/31/2022

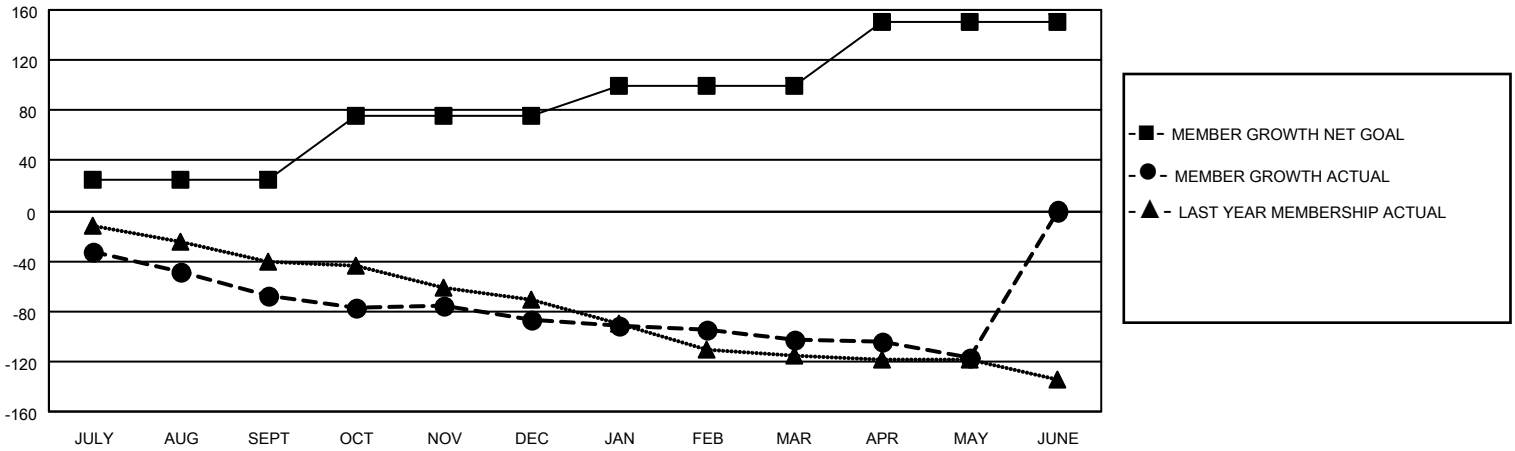
Clubs			
RESULTS FOR 2021-2022			
QUARTER	NEW CLUB GOAL	NEW CLUBS	DROPPED CLUBS
JULY/AUG/SEPT	0	0	4
OCT/NOV/DEC	0	0	0
JAN/FEB/MAR	1	0	1
APR/MAY/JUNE	1	0	0

Members			
RESULTS FOR 2021-2022			
QUARTER	MEMBER GROWTH NET GOAL	MEMBER GROWTH ACTUAL	DROPPED MEMBERS ACTUAL (including transfers)
JULY/AUG/SEPT	25	88	136
OCT/NOV/DEC	50	49	63
JAN/FEB/MAR	25	45	56
APR/MAY/JUNE	50	29	40

GOALS AND ACTUAL NEW CLUBS CUMULATIVE



GOALS AND ACTUAL MEMBERS CUMULATIVE



DROPPED CLUBS: 5

47 CLUBS OF 94 ADDED 1 OR MORE NEW MEMBERS

GENDER DISTRIBUTION

MALE	1,522 (63.15%)
FEMALE	888 (36.85%)
NON BINARY	0 (0.00%)
PREFER NOT TO ANSWER	0 (0.00%)

DROPPED MEMBERS

[CLICK HERE FOR CUMULATIVE MEMBERSHIP DATA](#)

DECEASED	58
CLUB CANCELLED	33
OTHER	203
TOTAL	294

TOTAL FAMILY UNIT MEMBERS	445
FAMILY MEMBERS PAYING HALF DUES	224